



# Village of Port Edwards

*Fall 2009 Newsletter*



## **Notes from the Engineer-Administrator**

As the Village staff prepares for the fall and winter season, the Village Board continues to work diligently to encourage reuse of the mill site and position the Village for economic development and job creation. The Village recently received a grant through the Wisconsin Office of Energy Independence to study the feasibility of hydrogen fuel cell research and the potential development of a large scale stationary hydrogen fuel cell plant to generate electricity utilizing regional resources. The Village is also in the process of creating an economic development tool called a Tax Incremental Finance District. This proposed district incorporates the industrial areas in the Village and can help pay for needed infrastructure in the event there is new industrial development/redevelopment.

There have been more than 30 requests to purchase portions of the mill site for business and industrial development and areas like the warehouse and the computer center have been getting serious attention. The Village continues to communicate with Domtar in an effort to expedite redevelopment and while the conversation has been fairly one sided for some time, communications have improved as of late and I continue to be optimistic that good news is in the making.

Due to a regional commitment both public and private, a new federal grant has been applied for to improve the highway corridors in the area. Part of this project includes a bridge connection in Port Edwards. The grant application was a very significant and sophisticated project and supporting documentation can be found online at <http://www.wirapids.org/egov/docs/1245678263310.htm> Announcements of grant awards are expected by February 2010.

## **Port Edwards Riverfront Beautification Project**

The Port Edwards Business Council is initiating and sponsoring a project to bring back the beauty of the flowering crab trees along the riverfront. Presently there are about 45 flowering crab trees in the parkway along Wisconsin River Drive and about 30 of these trees are damaged, diseased or dying mainly because they are nearly 50 years old. The project will start by pruning or removing existing trees and then planting 30 new trees over a two year period. The health of the trees will be maintained by regular watering and pruning.

The Port Edwards Business Council expects the project to begin this fall with pruning of the existing trees and the first planting will be in April 2010 on Arbor or Earth Day. We hope to involve citizens and school children in this event. A second similar planting will be in April 2011.

The Port Edwards Business Council will initiate a funding campaign this fall thru next spring to raise \$1500 from citizens and businesses in Port Edwards. We will be applying for matching grants from the Port Community Progress Fund and the Wisconsin Urban Forestry Fund. The project will require \$5000 for the pruning of the old trees and purchasing of the new trees. The cost of a 1" diameter rooted flowering crab tree is about \$100. Volunteers will be needed to help in the planting of the trees to minimize the costs of planting the new trees.

**The Port Edwards Business Council needs your support** to replace the dying flowering crab trees in the parkway along the Wisconsin River in Port Edwards. If you are willing to help with further planning of this project; raising funds; pruning existing trees; or the planting of the new trees, please call the Village office at 887-3512 or contact Ralph Lau at 887-3979.

Ralph Lau, Co-coordinator-Port Edwards Business Council

## New Wisconsin 534 Area Code



To ensure a continuing supply of telephone numbers in our area the Public Service Commission of Wisconsin (PSC) has approved the addition of the 534 area code to the geographic region currently served by 715. The new Wisconsin area code of 534 will share the same region as the existing 715 area code.

What does this mean to us? Everyone who has an existing number in the 715 calling area will keep their number but any new numbers distributed in the near future will be given the 534 prefix for their number. Thus we will eventually have two different area code prefixes in our area.

To accommodate these changes we will need to adjust our dialing habits. To complete local calls, the new dialing procedure requires callers to dial the full 10-digit telephone number. This means that all calls from the 715 area code that are currently dialed with 7 digits will need to be dialed using the **area code + 7-digit telephone number**. This same procedure will be followed for numbers issued with the 534 prefix. When dialing long distance calls, the procedure will remain the same with callers dialing **1 + area code + 7-digit telephone number**.

When will these changes go into effect? **Effective October 17, 2009**, you should begin using the new dialing procedure whenever you place local calls from the 715 area code. If you forget and use the old dialing procedure of dialing just 7 digits, your call will still be completed. **Beginning July 17, 2010**, you must use the new dialing procedure for all local calls. After this date, if you do not use the new dialing procedure, your call will not be completed and a recording will provide instruction on how to redial your call.

What else to consider? You will need to change any preprogrammed numbers including phones, fax machines, life safety systems, internet dialup numbers, alarm & security systems, speed dialers, call forwarding settings, voice mail services and similar functions. Remember to consider your web sites, stationeries, personal checks, contact information and your ID tags to ensure the area code is included.

All numbers like 211 & 911 that are currently available in our area will still be dialed with just three digits.

Also, the 920 area code to our southeast will be undergoing these same changes with a new area code of 274 being added to their region.

## Police Department News



Just a few fall and winter reminders;

- Winter parking restrictions start November 1<sup>st</sup> 2009 and end April 1<sup>st</sup> 2010, No Parking on Village Streets from 11:00 pm until 6:00am. Violators will be ticketed.
- School is back in session. Please be aware of children on bikes and an increase of pedestrians within the Village. Be cautious and drive safely in school zones.
- To all pet owners, please pick up your pet waste during the fall and winter seasons. Be courteous to everyone utilizing the recreation trail.
- Email, telephone and postal scams are on the increase. Do not give out personal information such as bank account numbers, social security numbers or credit card information. If you have questions call the Police Department.
- We are working with Wood County Crime Stoppers and hopefully will soon have a service available where anyone can report a crime via email or text message. This information will be available on the Village website ([www.portedwardswi.com](http://www.portedwardswi.com)) at the end of October. As always, please do not hesitate to call the Police Dept. to report a crime. With your help we will work together to continue to make Port Edwards a safe place to live.

## Safe Disposal of Prescription Medicines

Due to a grant from the Wisconsin Department of Agriculture, Trade and Consumer Protection residents can safely dispose of unwanted or expired prescription medications during the next couple months.

**The Wisconsin Rapids Police Department will be collecting and disposing of old prescription medications now through November during their regular business hours (715-421-8911).**

Medications should remain in their original containers so pharmacists assisting with the collection can identify and classify the drugs for disposal.

Should you have any questions on what items will be accepted and other collection guidelines, please contact the Wisconsin Rapids Police Department.



Another relevant article follows and also gives options for disposing of drugs once this program expires.

## *Drugs in our Waterways*

*Article by Michelle Moore & Sandra Fallon, National Environmental Services Center and Rural Community Assistance Corporation (permission granted to reprint)*

Every time someone washes a product like antibacterial soap down the sink or flushes an unfinished prescription down the toilet, these things end up in your community's sewage treatment plant or septic tanks. Not all surprising, right? But, did you know that septic systems and sewage treatment systems are not equipped to remove medications and chemicals in personal care products from wastewater? It's true.

Flushing unused medications was a common practice recommended for years, even by health care professionals. It seemed the safest way to dispose of prescription drugs to keep them out of the wrong hands. As for cosmetic and cleaning products – lotions, sunscreens, shampoo, and laundry detergent, to name just a few – we don't think twice about what happens to them when we rinse them away. But all of these medications and products end up in our wastewater flow, and there is increasing evidence that they are polluting water bodies across the country, including our drinking water sources.

These compounds, termed PPCPs, or pharmaceuticals and personal care products (which also include nutritional supplements and veterinary medications), are showing up in streams, rivers, and groundwater, and are suspected in causing disturbing changes to fish that live in these water bodies. In some streams, female fish are outnumbering males, and researchers are finding males with female sex characteristics. Some substances, such as hormone treatments and birth control pills, are thought to be disrupting aquatic animals' hormone systems, which regulate certain cell or organ functions.

Studies indicate that chemicals from PPCPs, even at very small concentrations in the water, may be harmful to aquatic life. With more people using prescription medications everyday, the likelihood of these chemicals becoming an even greater problem is very real. No one knows for certain whether PPCPs in the water are harmful to people. Researchers are exploring whether the cumulative effects of long-term exposure can cause problems for both humans and wildlife.

What can residents do to help stem this flow of chemical substances into our waterways? We can stop flushing medications down the toilet unless

the label specifies it is safe to do so. A less preferred way to dispose of drugs is for people to throw drugs into the trash but only after preparing them for safe disposal. Safe disposal means to remove drugs from their original containers and add them to something like glue, wet coffee grounds, or used kitty litter to make them unappealing to pets, children, or anyone who might find them. Drugs should then be placed in a watertight container, like a margarine tub, to help conceal their presence and keep them from leaking in the landfill. Liquid medications can be left in their original bottles with flour, salt, or some other dry powder added. All identifying information should be removed from containers by scrubbing off the labels or blacking them out with an indelible marker.

As for personal care products, reducing the amount we use is an important first step in keeping them out of our waters. Being conscientious when buying new items can also make a difference. We can choose products that consist of natural ingredients and are biodegradable or unscented, and avoid those that are labeled as antibacterial (such as hand and bath soaps). Until a better disposal method becomes available, unused portions should be left in their original containers and disposed of in the trash, never by emptying into the sink. To help reduce packaging that ends up in the landfill, people can purchase personal care products in bulk and refill their own containers.

Keep in mind that whether you throw PPCPs down the drain or in the trash, the contaminants will eventually get into the water. Neither disposal option is environmentally sound.

Our communities' future and wellbeing depends on clean and safe water. Whatever our water source is at home – river, lake, or groundwater – we all contribute to PPCP pollution and we can all take steps to decrease it. As with other pollutants we allow to enter our waterways, the cost of removing them through wastewater treatment – if even possible – could total millions of dollars and far exceed the cost of keeping them out in the first place. Educating all of us about proper disposal is integral in our efforts to slow the flow of these chemicals in our waterways.

## Nekoosa Area Community Center

Nekoosa is pleased to announce that their Nekoosa Area Community Center has received a \$510,000 grant from a Community Development Block Grant (a stimulus program thru President O'Bama). With over five years of fundraising they are now 75% of the way to their goal. The grant is a matching funds grant, so the Nekoosa Area Senior/Community Center committee still needs to raise approximately \$250,000. The facility will be used for several senior programs including the senior meals program and many of the area groups (VFW, Lions, etc.) will also be using the building. On weekends, Nekoosa expects that the building will be rented for weddings, reunions, etc. Due to the urgency of the project, with groundbreaking to be in the spring of 2010, Nekoosa is contacting area residents for donations. Any donation is welcome and a donor wall is planned to honor gifts in excess of \$500. Donor wall applications may be picked up at the Nekoosa City Hall or at 418 Market Street in Nekoosa. If you or anyone you know would like to make a tax-deductible contribution please make checks payable to "The Nekoosa Area Community Center" and mail to the Community Foundation of Greater South Wood County, P.O. Box 444, Wisconsin Rapids, WI 54495-0444. For more information, please contact Patty Tarras at 886-3240 or Jerry Cordes at 886-4470.



### **Leaf Pick-up**

It is again that time of year for leaves. Due to the tremendous quantity of leaves put out in just a short time, please remember to **place leaves in the gutter section** of the street in a long row along your property. ***Only leaves may be placed along the gutter and please note that this is the only time of the year that anything can be placed in the gutter.***

Separated piles of brush and grass must be placed on the boulevard area behind the curb and the brush must be stacked neatly with the cut ends facing the street. Also, roots must be removed from the brush and placed separately from the branches.

If you follow these rules, your leaves and other yard waste will be picked up in a timely manner.



## Water & Sewer Billings

Water and sewer billings are quarterly, the 1<sup>st</sup> of January, April, July, and October with the bills due 20 days later. After late notices are sent out you have ten days to pay or your water will be shut off. If your water has been shut off, there is a \$20.00 reconnect charge. Water bills can be paid at the Municipal Building from 8:00 A.M.-Noon and 1:00 P.M.-4:00 P.M., dropped in the silver payment box in front of the Municipal Building, or mailed in.

*Please pay promptly.*

### **Village of Port Edwards**

Municipal Building  
201 Market Avenue  
PO Box 10

Port Edwards, WI 54469  
715-887-3512

On the web at [PortEdwardsWI.com](http://PortEdwardsWI.com),  
click Municipal Services

### **Village Board**

President: Ed Saylor  
Trustees: Gary Allworden  
Tim Jensen  
Scott Machotka  
LuAnn Martinson  
Glenn Saeger  
Jonathan Smith

### **Village Staff**

Engineer-Administrator-Joe Terry  
Clerk-Treasurer-Julie Bodette  
Cashier-Secretary-Kim Holcomb

Meeting notices, agendas and all other legal notices are posted at the Municipal Building, Nekoosa Port Edwards State Bank, and Valley Communities Credit



Union at least 24  
hours before a

meeting.



## Fire Department News

The U.S. Fire Administration and the Port Edwards Fire Department would like to remind you of some important fire safety and prevention information.

Do you know that children under age 5 are twice as likely as the rest of us to die in a home fire? Here's what you can do to keep children safe from home fires: Keep matches and lighters out of their reach, maintain a working smoke alarm on every level of your home, and practice a fire escape plan. Pick a meeting spot outside of the home.

Most fires in the home start in the kitchen. For older adults, fires that begin while they are cooking are the third leading cause of fire death. The kitchen is a high danger zone for fire, so be extra cautious when cooking. Remember not to leave cooking food unattended. Don't wear loose clothing when cooking. Keep towels and pot holders away from the range. And, never use the range or oven to heat your home.

Do you know the second leading cause of fire death for older adults is heating? To make sure you'll stay warm and safe this winter, follow these life-saving tips: When buying a space heater, look for the auto-off feature should the heater fall over. Keep space heaters at least three feet away from other objects. Your fireplace should have a screen large enough to catch flying sparks and rolling logs.

The number one cause of preventable home fire deaths is smoking. If you smoke, practice these fire-safety tips to avoid putting your life, your home and your family at risk: Don't leave a burning cigarette, cigar or pipe unattended. If you feel drowsy, put it out immediately. Use deep ashtrays. And, never smoke in bed.

**Wood stoves and fireplaces** are becoming a very common heat source in homes. Careful attention to safety can minimize their fire hazard. To use them safely:

- Be sure the fireplace or stove is installed properly. Wood stoves should have adequate clearance (36 inches) from combustible surfaces and proper floor support and protection.
- Wood stoves should be of good quality, solid construction, and design. Purchase wood stoves evaluated by a nationally recognized laboratory, such as Underwriters Laboratories (UL).
- Have the chimney inspected annually and cleaned if necessary, especially if it has not been used for some time.
- Do not use flammable liquids to start or accelerate any fire.
- Keep a glass or metal screen in front of the fireplace opening, to prevent embers or sparks from jumping out, unwanted material from going in, and help prevent the possibility of burns to occupants.
- The stove should be burned hot twice a day for 15-30 minutes to reduce the amount of creosote buildup.
- Don't use excessive amounts of paper to build roaring fires in fireplaces. It is possible to ignite creosote in the chimney by overbuilding the fire.
- Never burn charcoal indoors. Burning charcoal can give off lethal amounts of carbon monoxide.
- Keep flammable materials away from your fireplace mantel. A spark from the fireplace could easily ignite these materials.
- Before you go to sleep, be sure your fireplace fire is out. NEVER close your damper with hot ashes in the fireplace. A closed damper will help the fire to heat up again and will force toxic carbon monoxide into the house.
- If synthetic logs are used, follow the directions on the package. NEVER break a synthetic log apart to quicken the fire or use more than one log at a time. They often burn unevenly, releasing higher levels of carbon monoxide.

**Remember: In Case of a fire get out and stay out. For more fire safety information, visit [usfaparents.gov](http://usfaparents.gov).**

**I hope the above tips keep you and your family safe.**

**Chief Tom Bartlett**

**Port Edwards Fire Department**



## Upcoming United States Census - 2010

The 2010 Census is a count of everyone living in the United States and is mandated by the U.S. Constitution.



The United States Postal Service (USPS) will deliver the 2010 Census questionnaires in March 2010 to every household. Public Sites will also be established for pickup of census questionnaires.

Census data is used to distribute congressional seats to states, to distribute more than \$435 billion in federal funds to local, state and tribal governments each year and to make decisions about what community services to provide.

The 2010 Census questionnaire will be one of the shortest in history, consisting of 10 questions and taking about 10 minutes to complete.

Strict laws protect the confidentiality of respondents and the information they provide.

### **What census bureau data can tell us about our community:**

Is our community gaining or losing population?

What is the age profile and household makeup?

To what extent are households paying large shares of their incomes on housing?

What is our community's income/poverty profile?

How is our community changing in terms of race and ethnicity?

What are the characteristics of our community's housing?

What is the educational profile of our community?

What share of our population has physical disabilities?

How has our occupation and industry makeup changed?

Further information on the 2010 Census may be obtained at:

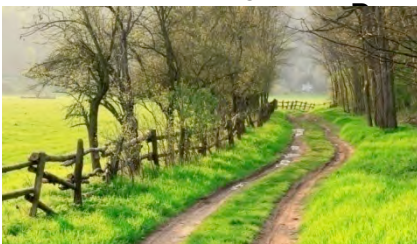
2010 Census - [www.2010census.gov](http://www.2010census.gov)

2010 Census Jobs - [www.2010censusjobs.gov](http://www.2010censusjobs.gov)

Toll Free Jobs Line – 1-866-861-2010

## Community Calendar Items

- Oct. 6 **Edgewater Haven Auxiliary** sponsored night of games, 16 games of bingo with prizes and light lunch, 7:30 p.m. Everyone is invited.
- Oct. 7 **Port Business Council**, Alexander House, 7:00 a.m.
- Oct. 13 **Village Board Meeting**, Municipal Building, 7:00 p.m.
- Oct. 31 **Village "Trick or Treating"**, 5:00 to 7:00 p.m.
- Nov. 3 **Edgewater Haven Auxiliary** sponsored night of games, 16 games of bingo with prizes and light lunch, 7:30 p.m. Everyone is invited.
- Nov. 4 **Port Business Council**, Alexander House, 7:00 a.m.
- Nov. 10 **Village Board Meeting**, Municipal Building, 7:00 p.m.
- Dec. 1 **Village Board Meeting**, Municipal Building, 7:00 p.m.
- Dec. 1 **Edgewater Haven Auxiliary** sponsored night of games, 16 games of bingo with prizes and light lunch, 7:30 p.m. Everyone is invited.
- 2 **Port Business Council**, Alexander House, 7:00 a.m.



**Does your organization or church have an event you would like publicized?** Submit it for the next Village newsletter by stopping at the Municipal Building or calling 887-3512 for more information.